



 4,067 Sq Ft

 6 Beds

 4.5 Baths

 2 Car Garage

 2.0 Story

Rainwater Crossing is a thoughtfully master-planned community rising from the charming and fast-growing town of Celina, Texas. Designed with a nature-inspired vision, the community seamlessly blends outdoor pursuits with everyday living, creating a relaxed retreat that still keeps you connected. Tucked away yet conveniently close to major highways and thriving shopping destinations, Rainwater Crossing offers the perfect balance of tranquility and accessibility. Homes by Centre Living Homes feature modern, open-concept floor plans with elevated finishes, including six thoughtfully designed layouts to choose from. Residents enjoy a meticulously planned amenity collection featuring a resort-style pool oasis, pickleball court, bike stations, and scenic trails—perfect for family time and active lifestyles. Located within

[Read More Online](#)

## Available Elevations



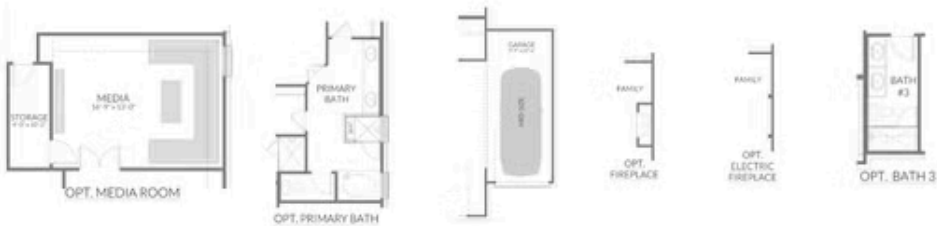
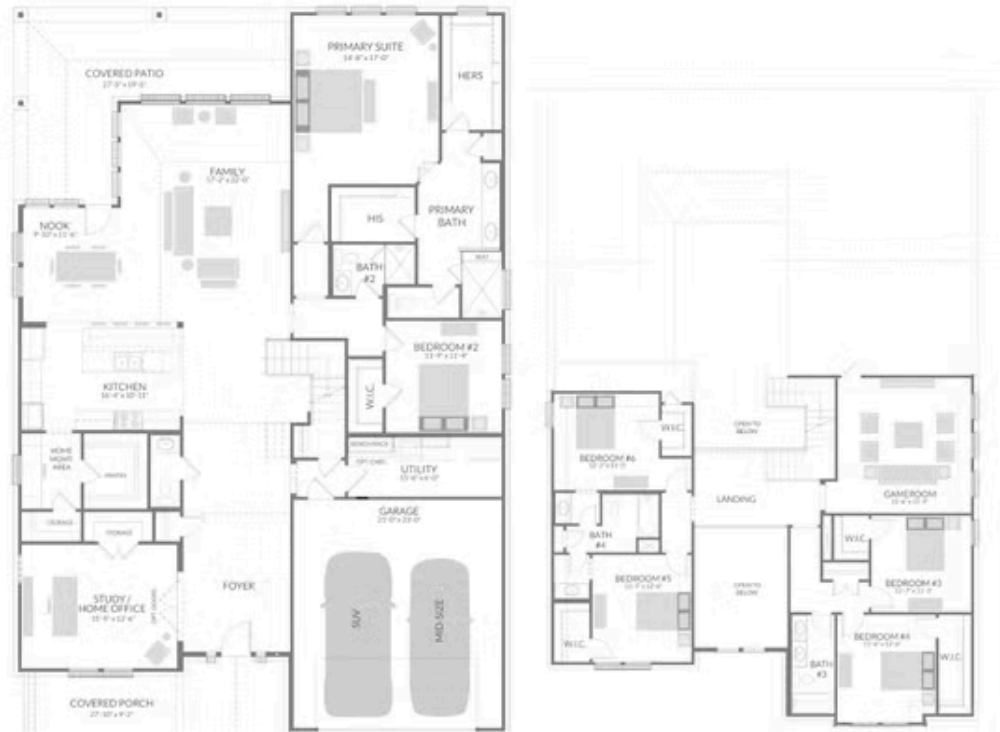




RAINWATER CROSSING

CASCADE PLAN

4,067 SOFT | 6 BED | 4.5 BATH | GAMEROOM | STUDY | OPT. MEDIA | 2-CAR GARAGE



Centre Living Homes policy of continual attention to design and construction requires that specifications, equipment and dimensions be subject to change without notice. Floor plans are artist renderings. Architectural are pending.

Want to Know More  
About This Home?

CONTACT OUR COMMUNITY SALES MANAGER  
NONE  
Call Us @ 469-567-3518