




PRICED AT
\$529,900

 2065 Sq Ft

 3 Beds

 3.5 Baths

 2 Car Garage

 3.0 Story

At Stevens Park Townhomes, you'll be living just a short distance from some of Dallas' premier dining & entertainment destinations including Trinity Groves and historic Bishop Arts. This exclusive 56-townhome community is centrally located in Oak Cliff and in close proximity to Interstate 30, easily connecting you to all things downtown Dallas. This neighborhood features lush green spaces, a dog park, and guest parking.

Want to Know More
About This Home?

CONTACT OUR COMMUNITY SALES MANAGER

KENLEY LEBLANC

Call Us @ 404-936-7770



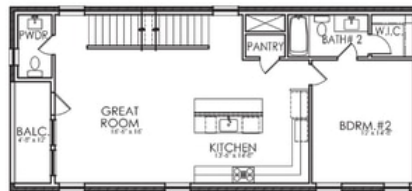
NEWMAN VILLAGE

2298 ROOK DRIVE

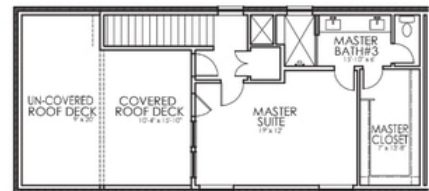
2,065 SOFT | 3 BED | 3.5 BATH | BALCONY | 2-CAR GARAGE



FIRST FLOOR



SECOND FLOOR



THIRD FLOOR



Centre Living Homes policy of continual attention to design and construction requires that specifications, equipment and dimensions be subject to change without notice. floor plans are artists renderings. Architectural are pending.

Want to Know More
About This Home?

CONTACT OUR COMMUNITY SALES MANAGER

KENLEY LEBLANC

Call Us @ 404-936-7770

