



PRICED AT
\$674,900

 3547 Sq Ft

 4 Beds

 3.5 Baths

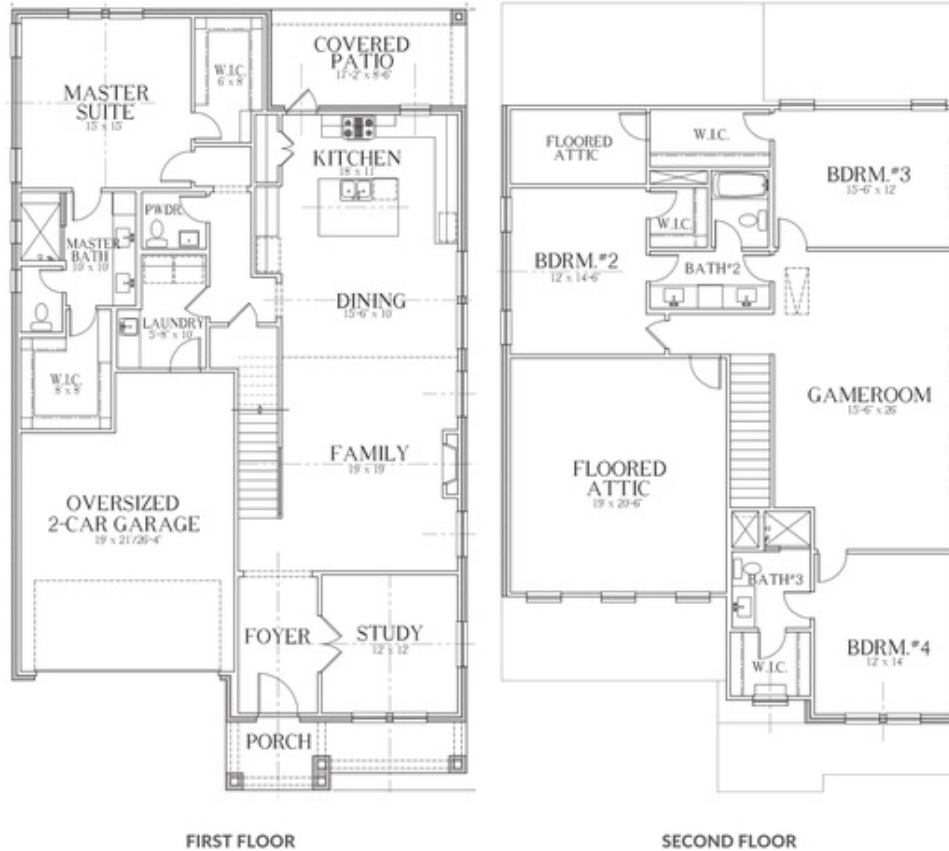
 2 Car Garage

 2.0 Story

New Construction by Centre Living Homes to be complete late Spring-Summer 2022. Part of the Heath Crossing Community this brand new community of 27 homes backs up to hike and bike trails as well as Buffalo Creek Golf Club. Our Travis plan boasts high ceilings in the living room along with a first floor owners bedroom, study and open kitchen and living room that's great for being social. The second floor has 3 additional bedrooms, media room and large game room. Gorgeous finishes throughout this home in a location you can't beat. *Attached photos on this listing are of our model home which is a different layout and reflects similar included finishes but may not be the same colors.

Want to Know More
About This Home?

CONTACT OUR COMMUNITY SALES MANAGER
NONE



Want to Know More
About This Home?

CONTACT OUR COMMUNITY SALES MANAGER
NONE