




PRICED AT
\$646,325

 2680 Sq Ft

 4 Beds

 4.0 Baths

 2 Car Garage

 2.0 Story

Painted Tree, located 30 miles north of Dallas and just west of I-75 near downtown McKinney, is planned as three distinct districts. Each is informed by the character of the land and all are linked by trails to unique destinations — through the woods, along the water, to parks, pools and places to gather. Each district will introduce a variety of new ways to live. Explore miles of greenways, pathways and nature trails, woven into 200 acres of natural open space and around a 20-acre fish-stocked lake. Then meet up with friends at any of three community hubs for revelry and relaxation at its finest. Where swimming pools and National-Park inspired spaces bring everyone together in the spirit of community.

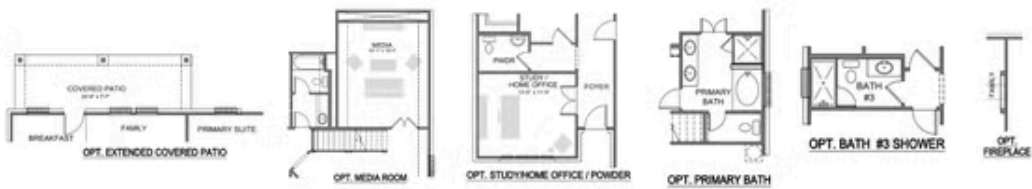
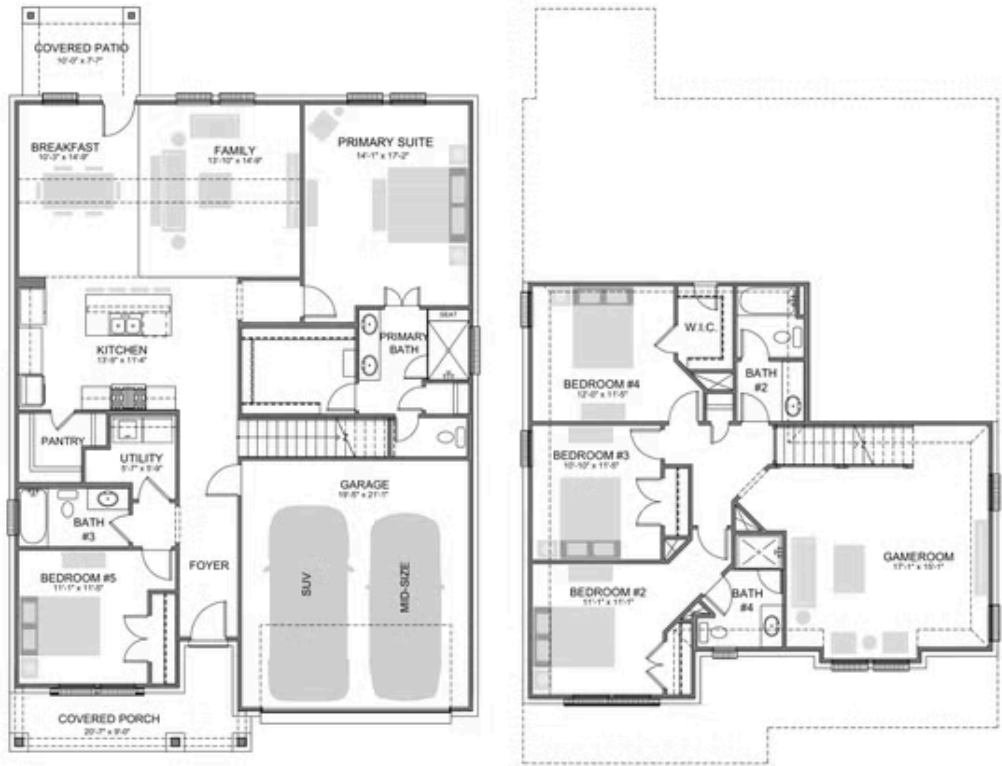
Want to Know More
About This Home?

CONTACT OUR COMMUNITY SALES MANAGER

DOUG WEBB

Call Us @ 281-236-9230

CENTRE LIVING HOMES **PAINTED TREE**
MAGNOLIA PLAN
 2,699-2,714 SQFT | 4 BED | 4 BATH | GAMEROOM | 2-CAR GARAGE



Centre Living Homes policy of continual attention to design and construction requires that specifications, equipment and dimensions be subject to change without notice. floor plans are artists renderings. Architectural are pending.

Want to Know More About This Home?

CONTACT OUR COMMUNITY SALES MANAGER
DOUG WEBB
 Call Us @ 281-236-9230