



3428 RED MOON WAY  
PEDERNALES  
TOWNHOUSE IN THE COMMONS AT SPRING CREEK | RICHARDSON, TX



PRICED AT  
**\$454,000**

 1482 Sq Ft

 2 Beds

 2.5 Baths

 2 Car Garage

 2.0 Story

The Commons at Spring Creek is an exclusive collection of 58 townhomes adjacent to Richardson's CityLine area. The neighborhood offers the best of urban living straight to your doorstep. This limited series of townhomes will feature large open spaces, contemporary designer finishes, and dedicated home offices.

Want to Know More  
About This Home?

CONTACT OUR COMMUNITY SALES MANAGER

**KHALIL WILLIS**

Call Us @ 469-618-3019

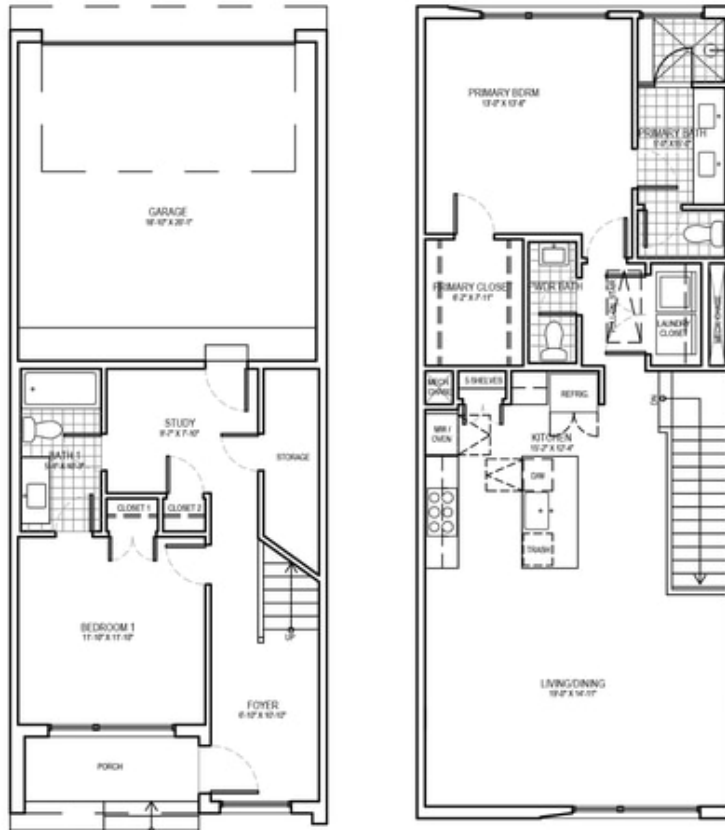
Please refer to actual blueprints for an accurate representation of home design. Home design and elevations subject to change without prior notice. Window, door and porch locations may vary by elevation. Subject to error, omission or withdrawal.





## PEDERNALES PLAN

1,482-1534 SQFT | 2 BED | 2.5 BATH | PORCH | 2-CAR GARAGE



Centre Living Homes policy of continual attention to design and construction requires that specifications, equipment and dimensions be subject to change without notice, floor plans are artists renderings. Architectural are pending.

Want to Know More  
About This Home?

CONTACT OUR COMMUNITY SALES MANAGER

**KHALIL WILLIS**

Call Us @ 469-618-3019