




PRICED AT  
**\$429,900**

 2409 Sq Ft

 3 Beds

 2.5 Baths

 2 Car Garage

 2.0 Story

Dove Hollow is a family-friendly master-planned community offering an expansive floor plans with ample flex and office space. This amenity rich community is less than 30-minutes from downtown Dallas and will offer a community center, a community park and an abundance of green spaces.

Want to Know More  
About This Home?

CONTACT OUR COMMUNITY SALES MANAGER

**KHALIL WILLIS**

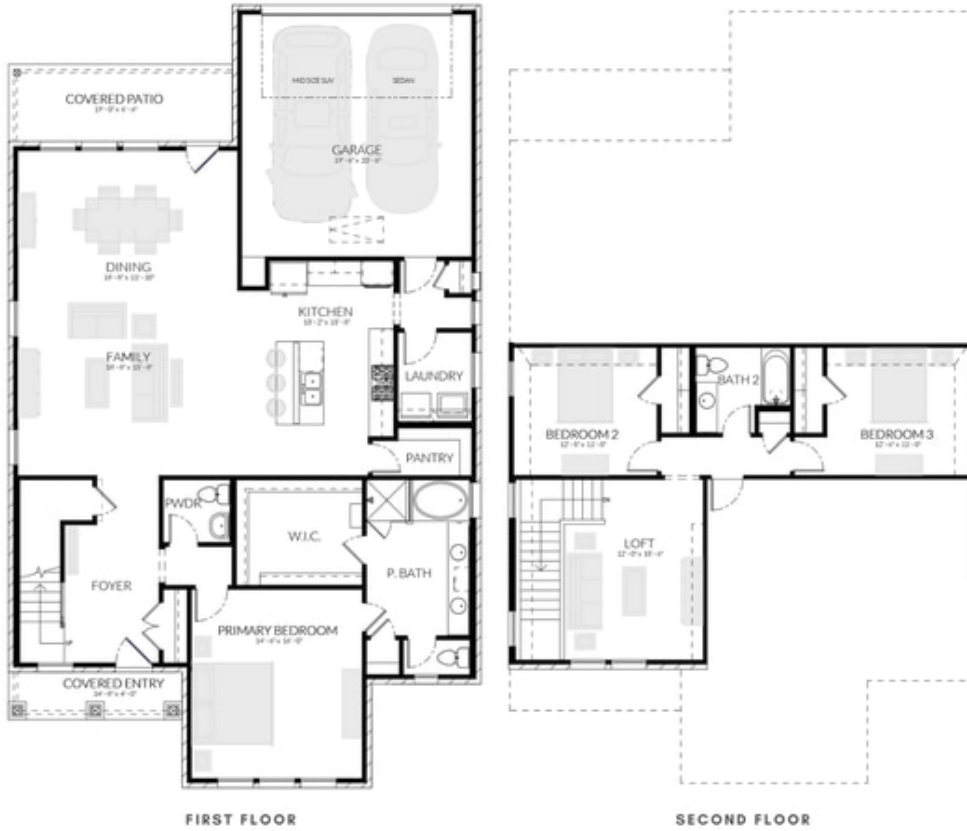
Call Us @ 469-618-3019



**DOVE HOLLOW**

**STARLING PLAN**

2,409-2,429 SQFT | 3 BED | 2.5 BATH | LOFT | COVERED PATIO | 2-CAR GARAGE



**Want to Know More  
 About This Home?**

CONTACT OUR COMMUNITY SALES MANAGER  
**KHALIL WILLIS**  
 Call Us @ 469-618-3019

