



PRICED AT
\$529,900

 3139 Sq Ft

 4 Beds

 3.5 Baths

 2 Car Garage

 2.0 Story

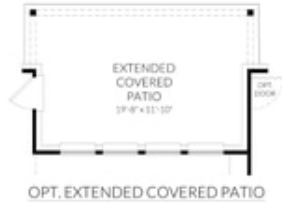
LARGEST LOT IN THE COMMUNITY, with a double lot of 18,850 sqft! Completion date of October 2022 with a 4% realtor commission. Visit our BRAND NEW model home at 222 Half Moon Drive in Waxahachie to view our new homes by Centre Living Homes. Gorgeous community with neighborhood hike and bike, playgrounds and pool. This plan boasts at 3139 SF with 4 bedrooms, 3.5 bathrooms with includes a study and game room. Our homes offer hard surface flooring throughout all of the main living areas including the Owner's bedroom. Top name brand appliances and open kitchen designed for a social lifestyle. All homes have 3 car garages and spacious back yards with patios. You don't want to miss out on the opportunity to live in Buffalo Ridge. *Ask us about our \$20k lender incentive! Close to great dining, retail, entertainment, and grocery stores nearby makes you feel like you live in the center of this quickly growing area.

Want to Know More
About This Home?

CONTACT OUR COMMUNITY SALES MANAGER

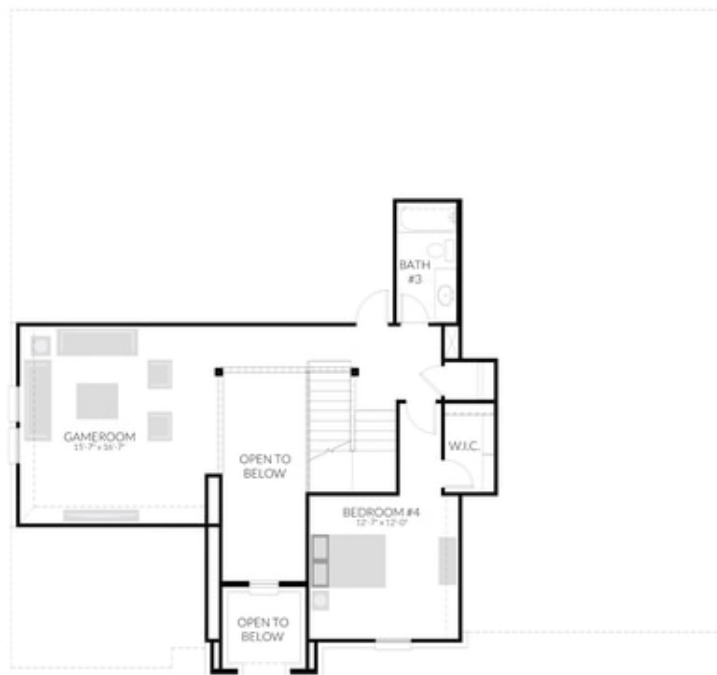
KHALIL WILLIS

Call Us @ 469-618-3019



Want to Know More
About This Home?

CONTACT OUR COMMUNITY SALES MANAGER
KHALIL WILLIS
Call Us @ 469-618-3019

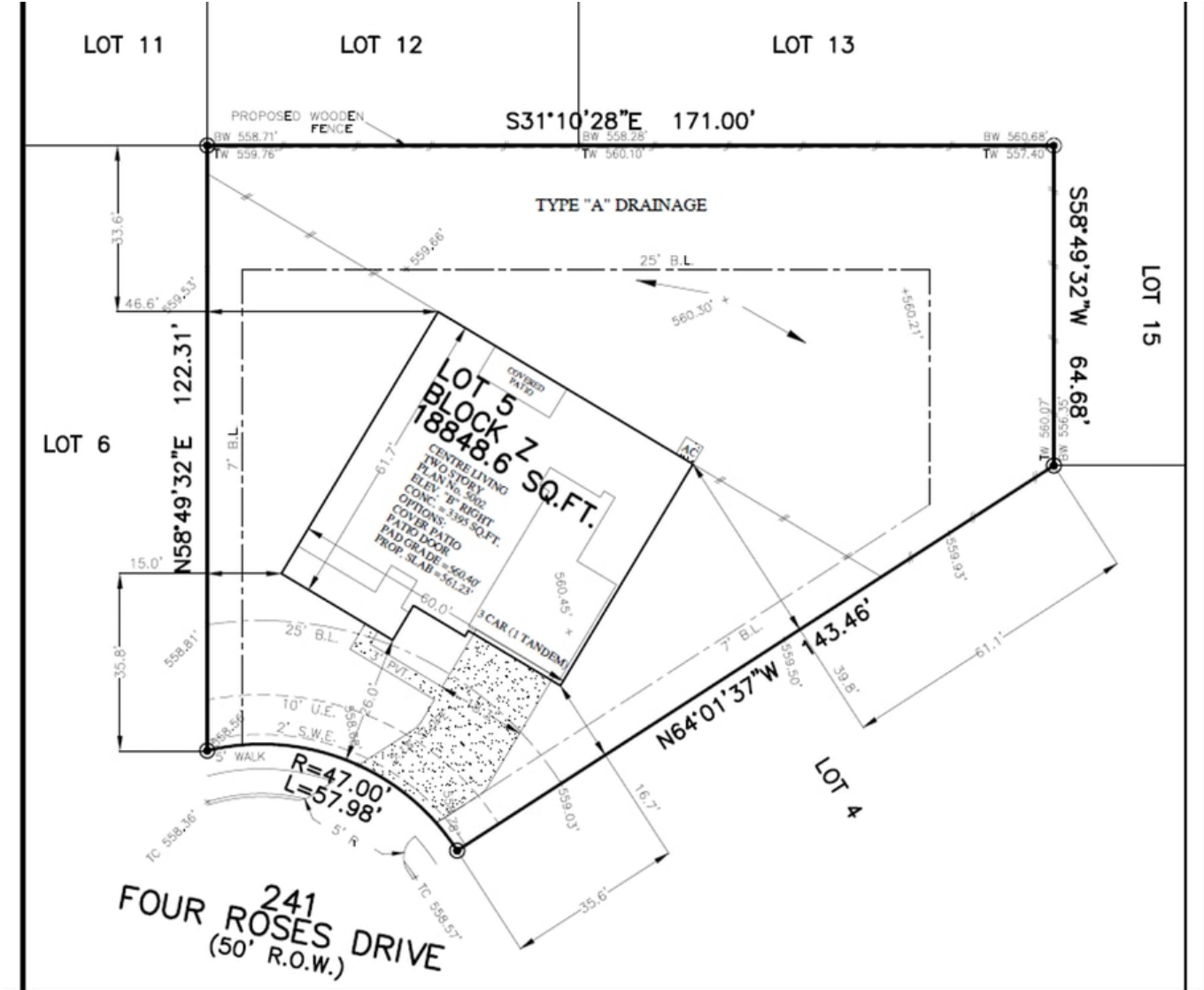


Want to Know More
About This Home?

CONTACT OUR COMMUNITY SALES MANAGER

KHALIL WILLIS

Call Us @ 469-618-3019



Want to Know More
About This Home?

CONTACT OUR COMMUNITY SALES MANAGER
KHALIL WILLIS
Call Us @ 469-618-3019