



PRICED AT
\$389,900

 2147 Sq Ft

 3 Beds

 2.5 Baths

 2 Car Garage

 2.0 Story


Dove Hollow is a family-friendly master-planned community offering an expansive floor plans with ample flex and office space. This amenity rich community is less than 30-minutes from downtown Dallas and will offer a community center, a community park and an abundance of green spaces.

**Want to Know More
About This Home?**

CONTACT OUR COMMUNITY SALES MANAGER

LOGAN CHIPMAN

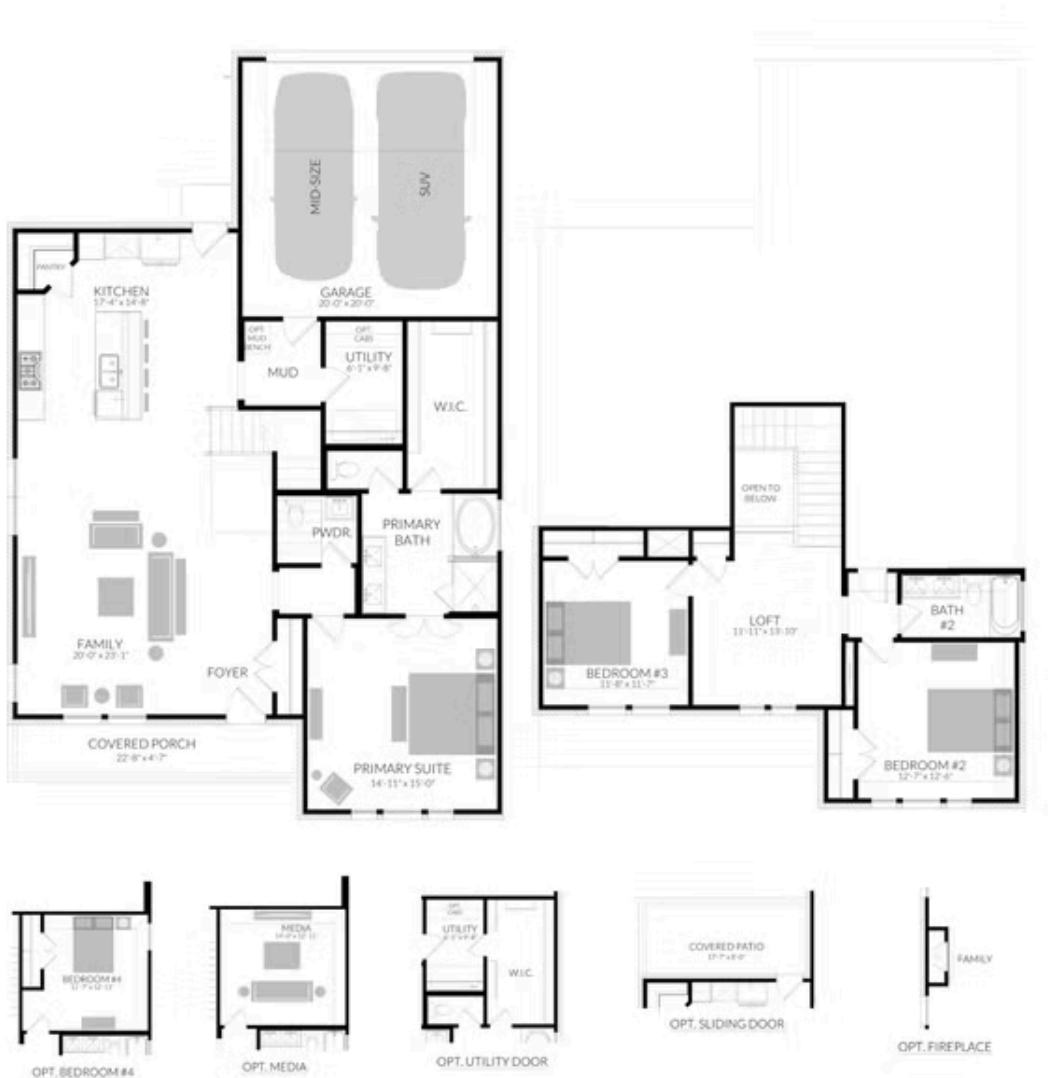
Call Us @ 214-433-4991

 CENTRE LIVING
HOMES

DOVE HOLLOW

ROBIN PLAN

2,147 SQFT | 3 BED | 2.5 BATH | LOFT | COVERED PATIO | 2-CAR GARAGE



Want to Know More
About This Home?

CONTACT OUR COMMUNITY SALES MANAGER
LOGAN CHIPMAN
Call Us @ 214-433-4991