




PRICED AT
\$429,900

 2682 Sq Ft

 4 Beds

 2.5 Baths

 2 Car Garage

 2.0 Story

Dove Hollow is a family-friendly master-planned community offering an expansive floor plans with ample flex and office space. This amenity rich community is less than 30-minutes from downtown Dallas and will offer a community center, a community park and an abundance of green spaces.

Want to Know More
About This Home?

CONTACT OUR COMMUNITY SALES MANAGER

LOGAN CHIPMAN

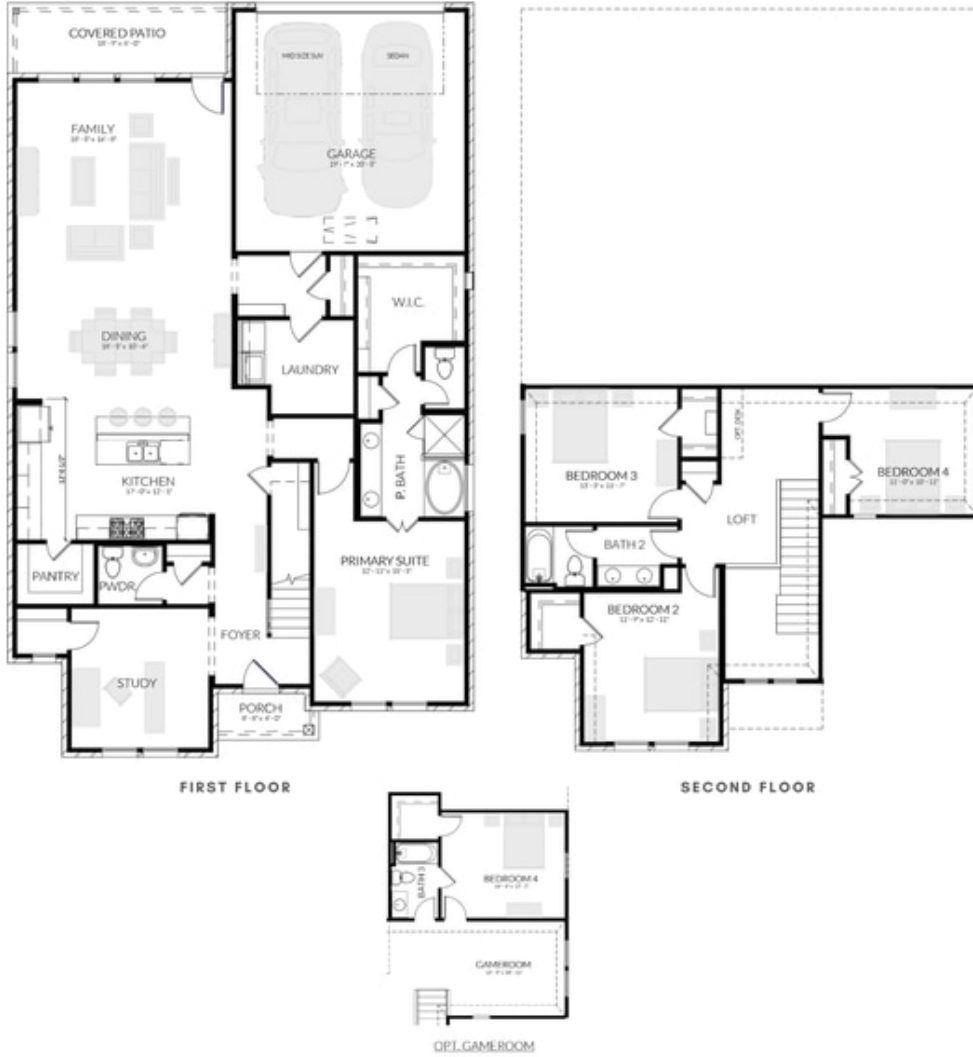
Call Us @ 214-433-4991



DOVE HOLLOW

DOVE PLAN

2,682 SQFT | 4 BED | 2.5 BATH | STUDY | LOFT | COVERED PATIO | 2-CAR GARAGE



Want to Know More
About This Home?

CONTACT OUR COMMUNITY SALES MANAGER

LOGAN CHIPMAN

Call Us @ 214-433-4991