




PRICED AT  
**\$389,900**

 2147 Sq Ft

 3 Beds

 2.5 Baths

 2 Car Garage

 2.0 Story

Dove Hollow is a family-friendly master-planned community offering an expansive floor plans with ample flex and office space. This amenity rich community is less than 30-minutes from downtown Dallas and will offer a community center, a community park and an abundance of green spaces.

Want to Know More  
About This Home?

CONTACT OUR COMMUNITY SALES MANAGER

LOGAN CHIPMAN

Call Us @ 214-433-4991

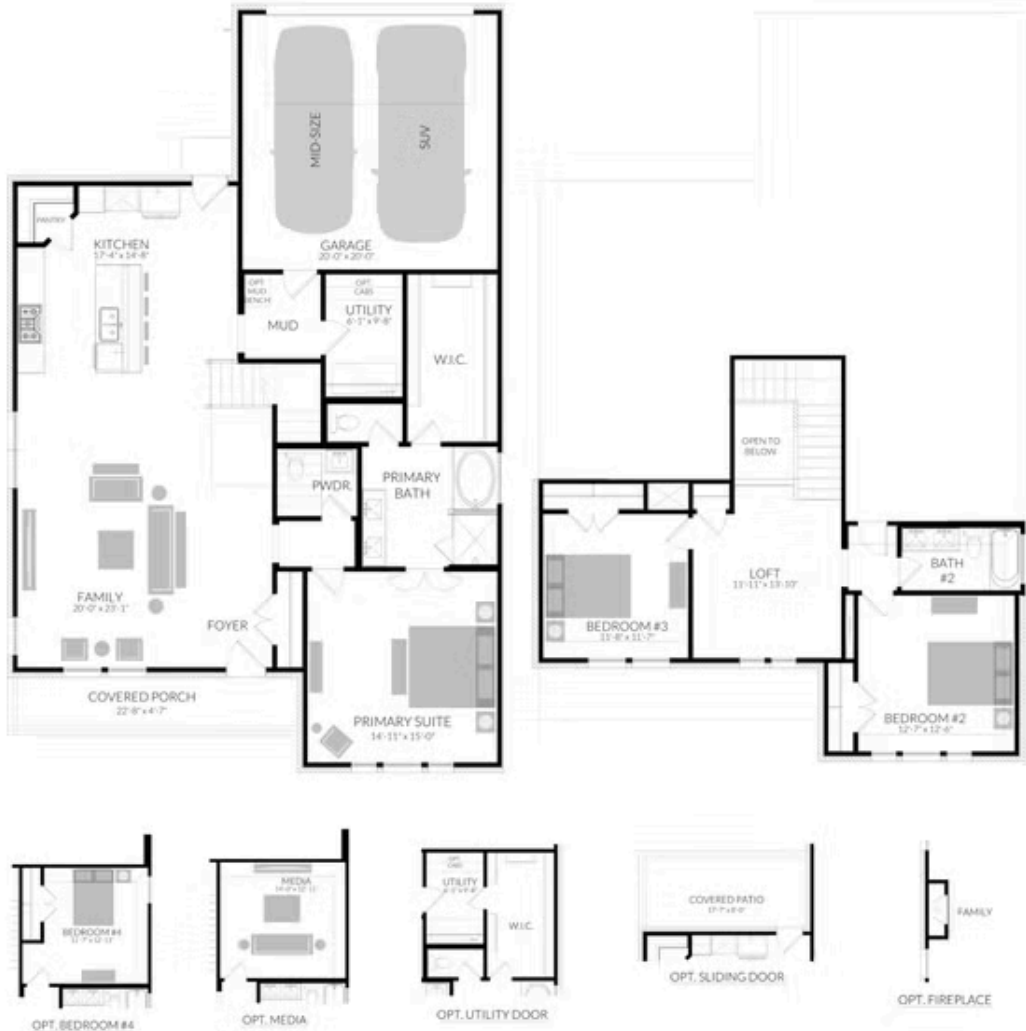




## DOVE HOLLOW

### ROBIN PLAN

2,147 SQFT | 3 BED | 2.5 BATH | LOFT | COVERED PATIO | 2-CAR GARAGE



Want to Know More  
About This Home?

CONTACT OUR COMMUNITY SALES MANAGER  
LOGAN CHIPMAN  
Call Us @ 214-433-4991