



PRICED AT
\$499,900

 3444 Sq Ft

 4 Beds

 3.0 Baths

 2 Car Garage

 2.0 Story

Dove Hollow is a family-friendly master-planned community offering an expansive floor plans with ample flex and office space. This amenity rich community is less than 30-minutes from downtown Dallas and will offer a community center, a community park and an abundance of green spaces.

Want to Know More
About This Home?

CONTACT OUR COMMUNITY SALES MANAGER

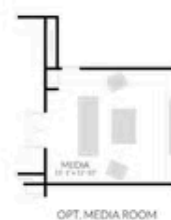
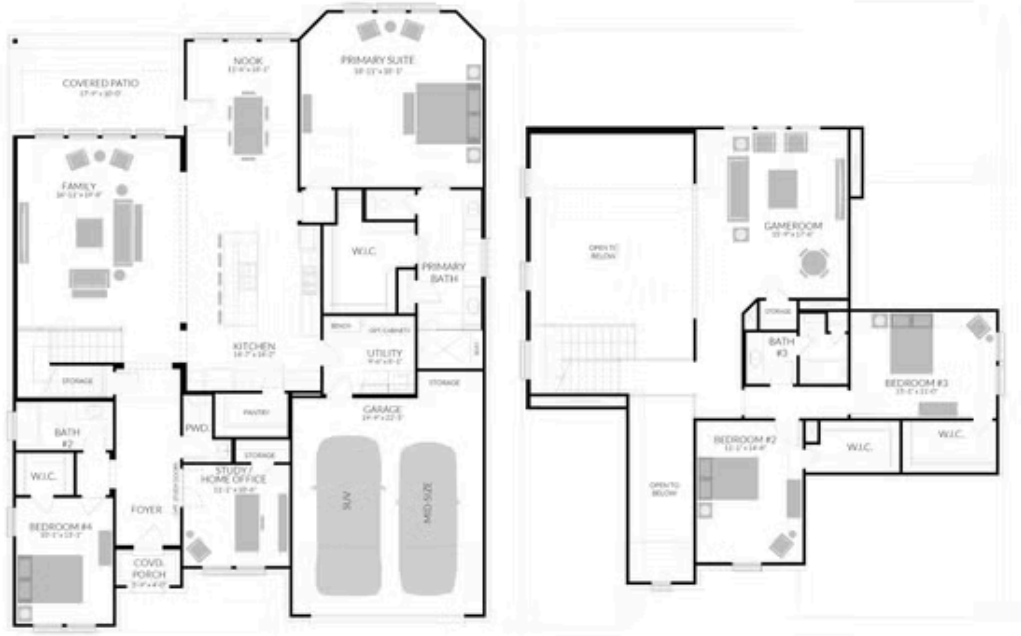
LOGAN CHIPMAN

Call Us @ 214-433-4991



PAINTED TREE
KENAI PLAN

3,344 SQFT | 4 BED | 3.5 BATH | GAMEROOM | STUDY | OPT. MEDIA | 2-CAR GARAGE



Centre Living Homes policy of continual attention to design and construction requires that specifications, equipment and dimensions be subject to change without notice. floor plans are artists renderings. Architectural are pending.

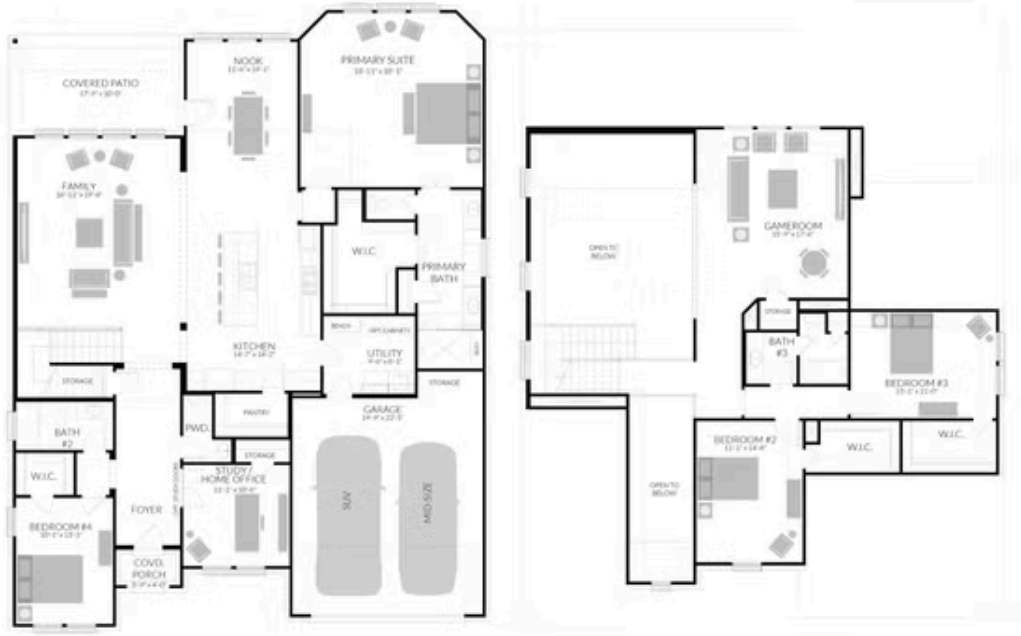
Want to Know More About This Home?

CONTACT OUR COMMUNITY SALES MANAGER
LOGAN CHIPMAN
 Call Us @ 214-433-4991



PAINTED TREE
KENAI PLAN

3,344 SQFT | 4 BED | 3.5 BATH | GAMEROOM | STUDY | OPT. MEDIA | 2-CAR GARAGE



Centre Living Homes policy of continual attention to design and construction requires that specifications, equipment and dimensions be subject to change without notice. floor plans are artists renderings. Architectural are pending.

Want to Know More About This Home?

CONTACT OUR COMMUNITY SALES MANAGER
LOGAN CHIPMAN
 Call Us @ 214-433-4991