




PRICED AT  
**\$479,900**

 2768 Sq Ft

 4 Beds

 2.5 Baths

 2 Car Garage

 1.0 Story

Dove Hollow is a family-friendly master-planned community offering an expansive floor plans with ample flex and office space. This amenity rich community is less than 30-minutes from downtown Dallas and will offer a community center, a community park and an abundance of green spaces.

Want to Know More  
About This Home?

CONTACT OUR COMMUNITY SALES MANAGER

LOGAN CHIPMAN

Call Us @ 214-433-4991

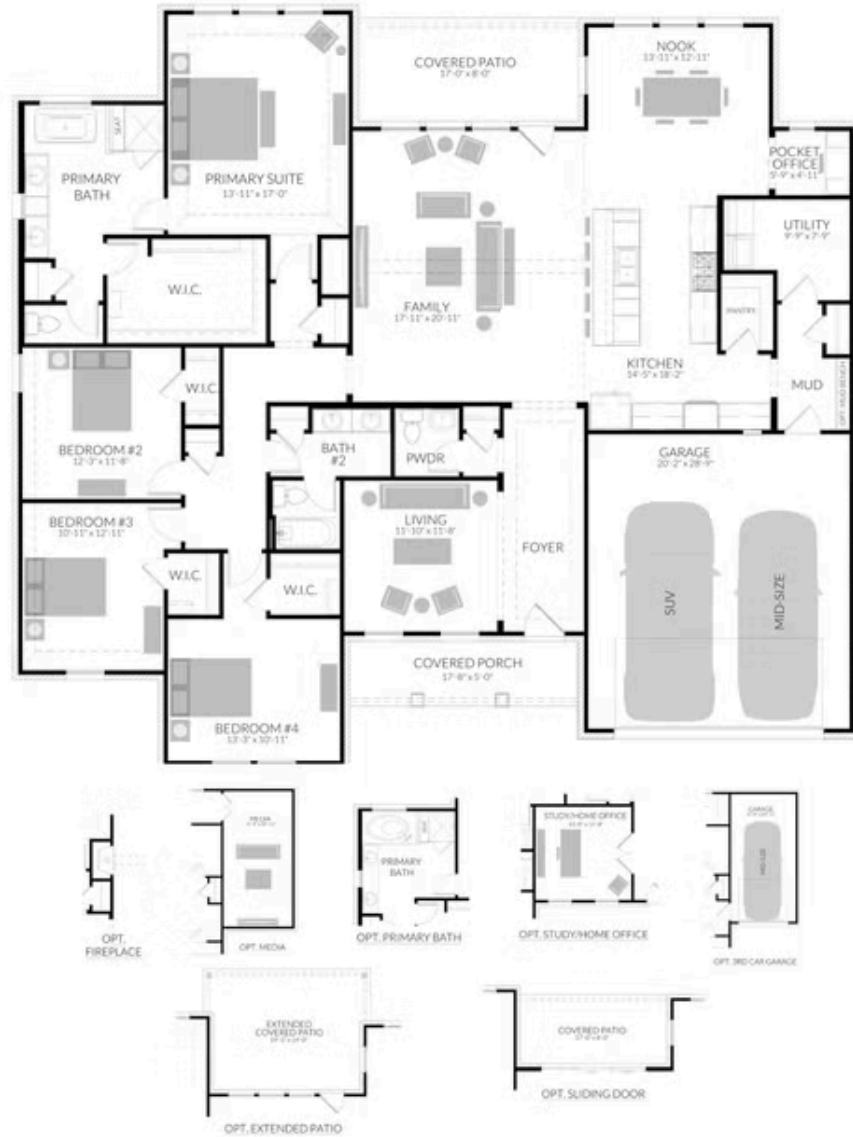




2,768 SQFT | 4 BED | 2.5 BATH | COVERED PATIO | OFFICE | STUDY | 2-CAR GARAGE

## DOVE HOLLOW III

### BELMONT PLAN



Want to Know More  
About This Home?

CONTACT OUR COMMUNITY SALES MANAGER  
LOGAN CHIPMAN  
Call Us @ 214-433-4991