




PRICED FROM
\$414,000

 2,409 - 2,429 Sq Ft

 3 Beds

 2.5 Baths

 2 Car Garage

 2.0 Story

Dove Hollow is a family-friendly master-planned community offering an expansive floor plans with ample flex and office space. This amenity rich community is less than 30-minutes from downtown Dallas and will offer a community center, a community park and an abundance of green spaces.

[Read More Online](#)

Available Elevations



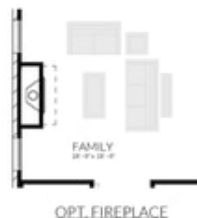
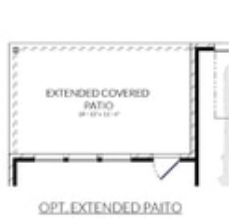
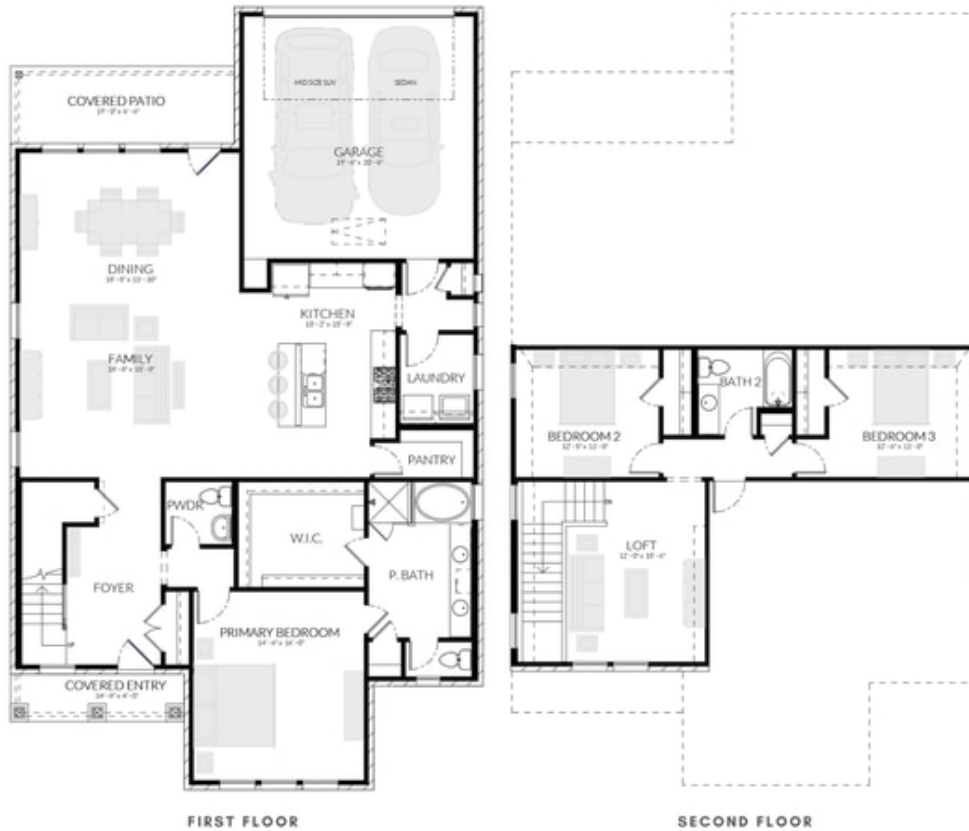
Please refer to actual blueprints for an accurate representation of home design. Home design and elevations subject to change without prior notice. Window, door and porch locations may vary by elevation. Subject to error, omission or withdrawal.



DOVE HOLLOW

STARLING PLAN

2,409-2,429 SQFT | 3 BED | 2.5 BATH | LOFT | COVERED PATIO | 2-CAR GARAGE



Want to Know More
About This Home?

CONTACT OUR COMMUNITY SALES MANAGER
LOGAN CHIPMAN
Call Us @ 214-433-4991