



PRICED FROM
\$589,900

 3,227 Sq Ft

 4 - 5 Beds

 2.5 Baths

 2 - 3 Car Garage

 1.0 Story

Lakeway Estates is located in Waxahachie and offers a serene lifestyle with expansive one-acre lots just moments from the lake. This quaint town combines the charm of small-town living with the convenience of being close to nearby attractions. Residents can take advantage of nearby shopping, dining, and entertainment options, along with several parks. Getzendaner Park, a 33-acre space, is perfect for leisurely walks, picnics, and playtime at the playground. Whether visiting the local farmers market, exploring downtown boutiques, or hunting for treasures in antique shops, Waxahachie provides a lively and welcoming atmosphere for all.

[Read More Online](#)

Available Elevations

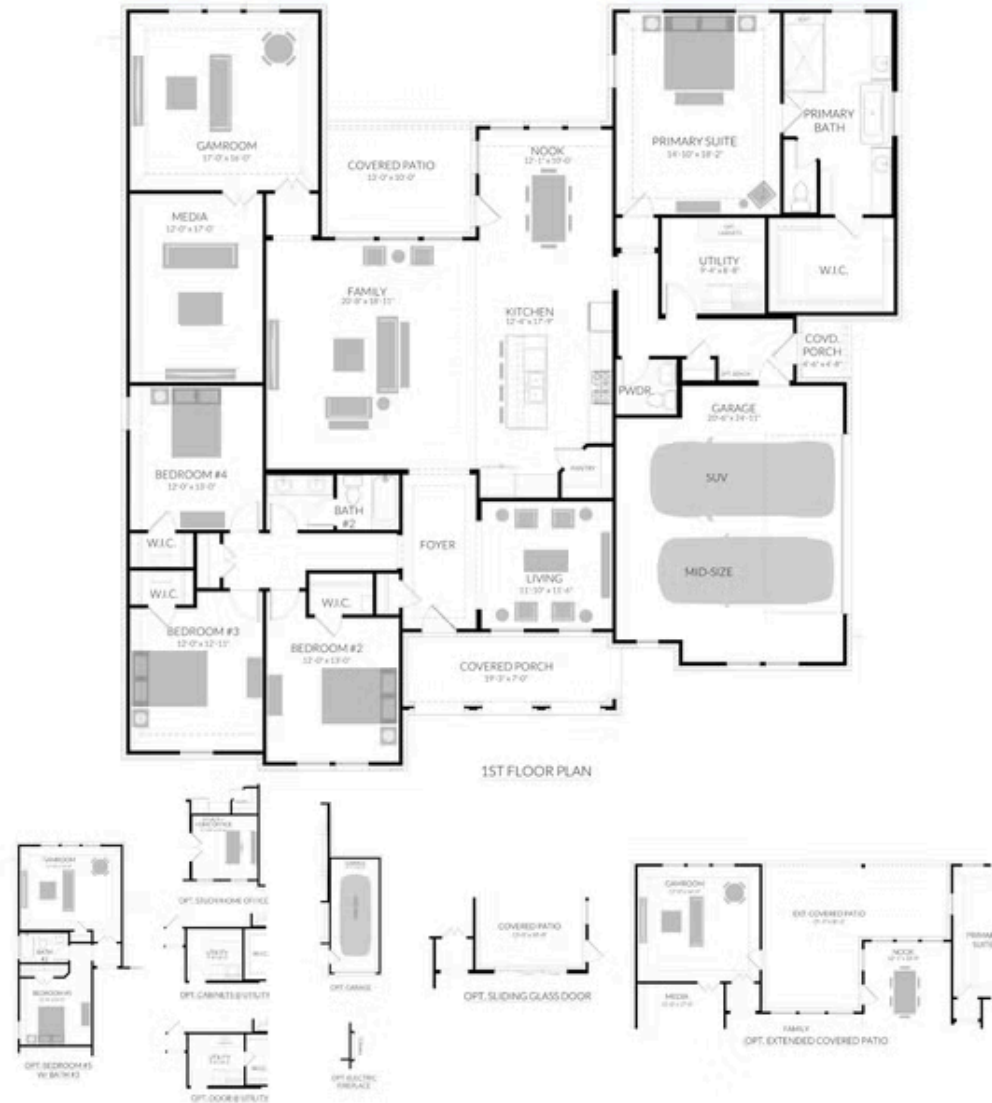




LAKEWAY ESTATES

HALSTED PLAN

3,227 SQFT | 4-5 BED | 2.5 BATH | COVERED PATIO | GAME ROOM | MEDIA ROOM | STUDY | 2-CAR GARAGE



Centre Living Homes policy of continual attention to design and construction requires that specifications, equipment and dimensions be subject to change without notice. floor plans are artists renderings. Architectural are pending.

Want to Know More
About This Home?

CONTACT OUR COMMUNITY SALES MANAGER
CHERONEY DOWNING
Call Us @ 619-535-5800